

Houston Region Diesel Engine Database
Minimum System Requirements
Installation Instructions
Quick Start Guide version 0.1

Recommended System Specifications¹

Hardware:

- Intel Pentium-4 Class CPU
- 512 MB RAM
- 200 MB Free harddrive space

Software:

- Microsoft Access 2003 SP2 or later

Installation Procedures

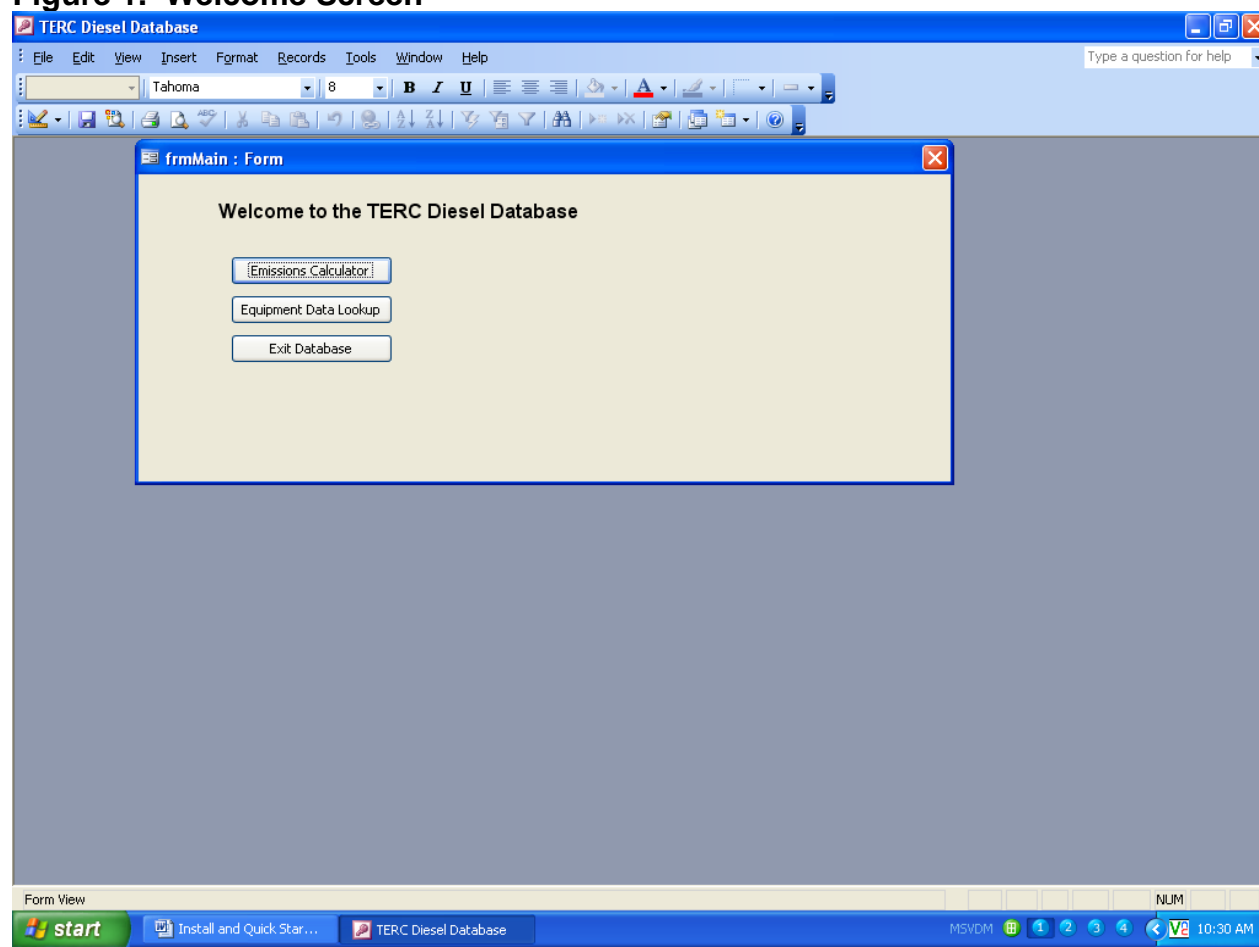
Download the Access database (*TERC_dsl_db.mdb*).

Quick Start Guide

Open the Access database. Upon opening, the user will be presented with a welcome screen, as seen below in Figure 1. This screen allows a user to select the Emissions Calculator or the Equipment Data Lookup function. The user may also exit the database from this screen.

¹ The diesel database utility has not been exhaustively tested on all system configurations. Utility may function properly on systems with lesser specifications.

Figure 1. Welcome Screen



Emissions Calculator

A user enters the emissions calculator by clicking the *Emissions Calculator* button on the Welcome screen. This will open the **Emissions Calculator** screen, as shown in Figure 2.

This screen allows a user to sequentially apply “filters” to the data to create a customized report. A user chooses which filters to apply by selecting available options from the drop-down boxes in the **Filter Criteria** section of this screen. A user steps through the filter criteria sequentially, applying a filter of interest, or choosing “No Filter”. Mandatory filters are denoted with an asterisk (*) and bold print.² The application requires a user to select one of the available options from the filter criteria for mandatory fields (i.e., “No Filter” is not a valid selection for a mandatory field). This prevents a user from building a query that will return zero records.

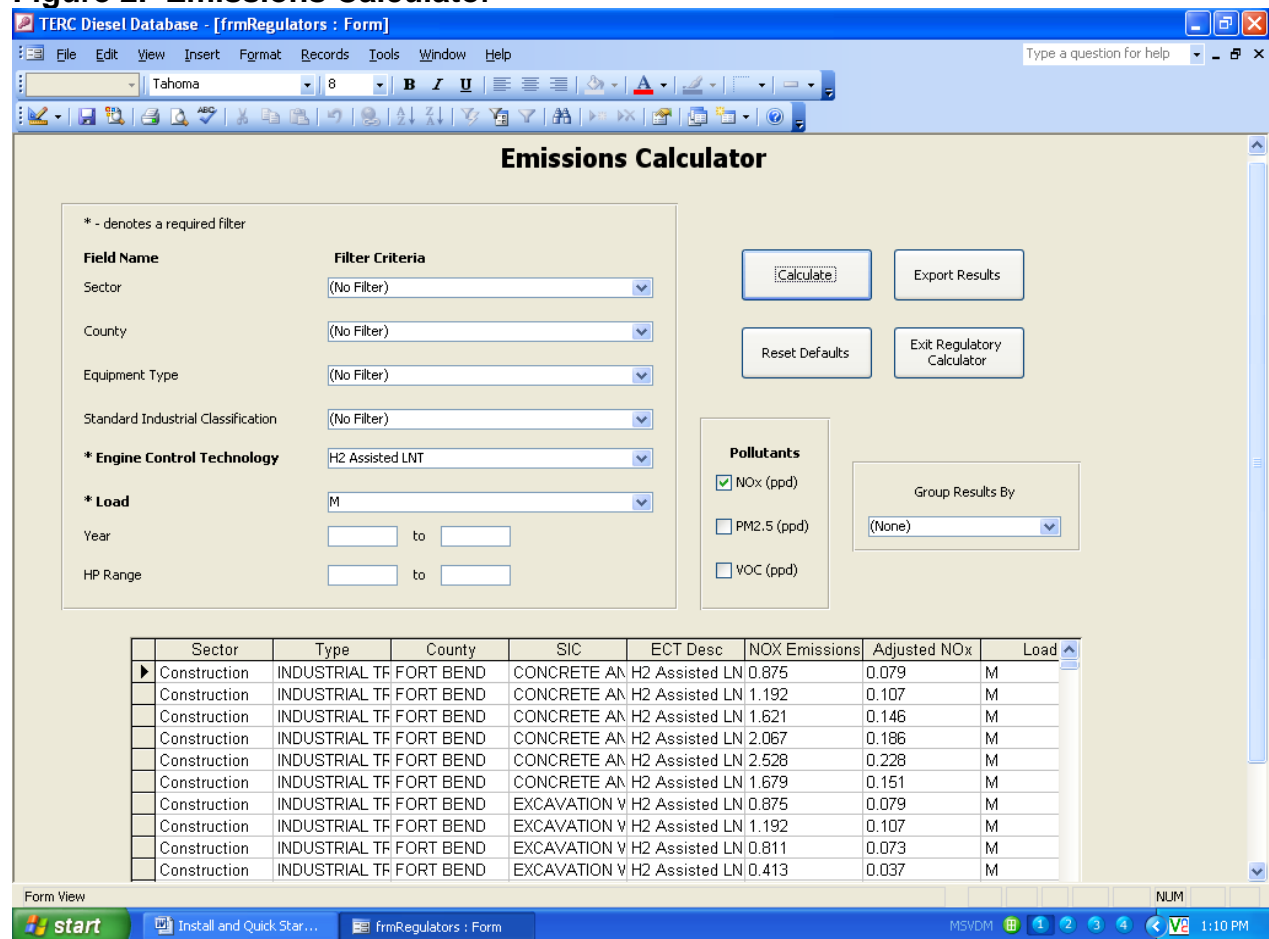
Once the filter criteria are selected, a user must specify which pollutants to include in the Custom Report. A user may select one or more pollutants by checking the box next to the specified pollutant in the **Pollutants** box which appears on this screen.

² Selecting “default” under Load filter assigns load values corresponding to NONROAD defaults.

The user may also create a summary report by choosing one of the summary options from the **Group Results By** drop down box on this screen, although this is optional.

Finally, the user creates the desired report by clicking the *Calculate* button on this screen. The report will be displayed as a table in the white-space at the bottom of this screen. The user may use the scroll bars in the report area to scroll up and down, left and right within the report. The user may also use standard Access functionality to manipulate the data. For example, the user can sort the report by clicking on a column header in the report to highlight that column, right click using the mouse to open a menu, and choose sort (ascending or descending) from the pop-up menu. A user may also re-arrange the order in which the data columns appear. To do this, a user highlights that column by clicking on the column header. Then, the user places the cursor over the column header, left-clicks and holds the mouse button, drags the column to the desired order in the report, and releases the mouse button.

Figure 2. Emissions Calculator



Once the report has been run, a user may export the report to an Excel file by clicking on the *Export Results* button.

In order to run a new report, all of the filters must be cleared and set back to default by clicking the *Reset Defaults* button on this screen.

The user may exit the Emissions Calculator and return to the welcome screen by clicking on the *Exit Regulatory Calculator* button.

Equipment Data Lookup

A user enters the equipment data lookup tool by clicking the *Equipment Data Lookup* button on the Welcome screen. This will open the **Equipment Data Lookup** screen, as shown in Figure 3.

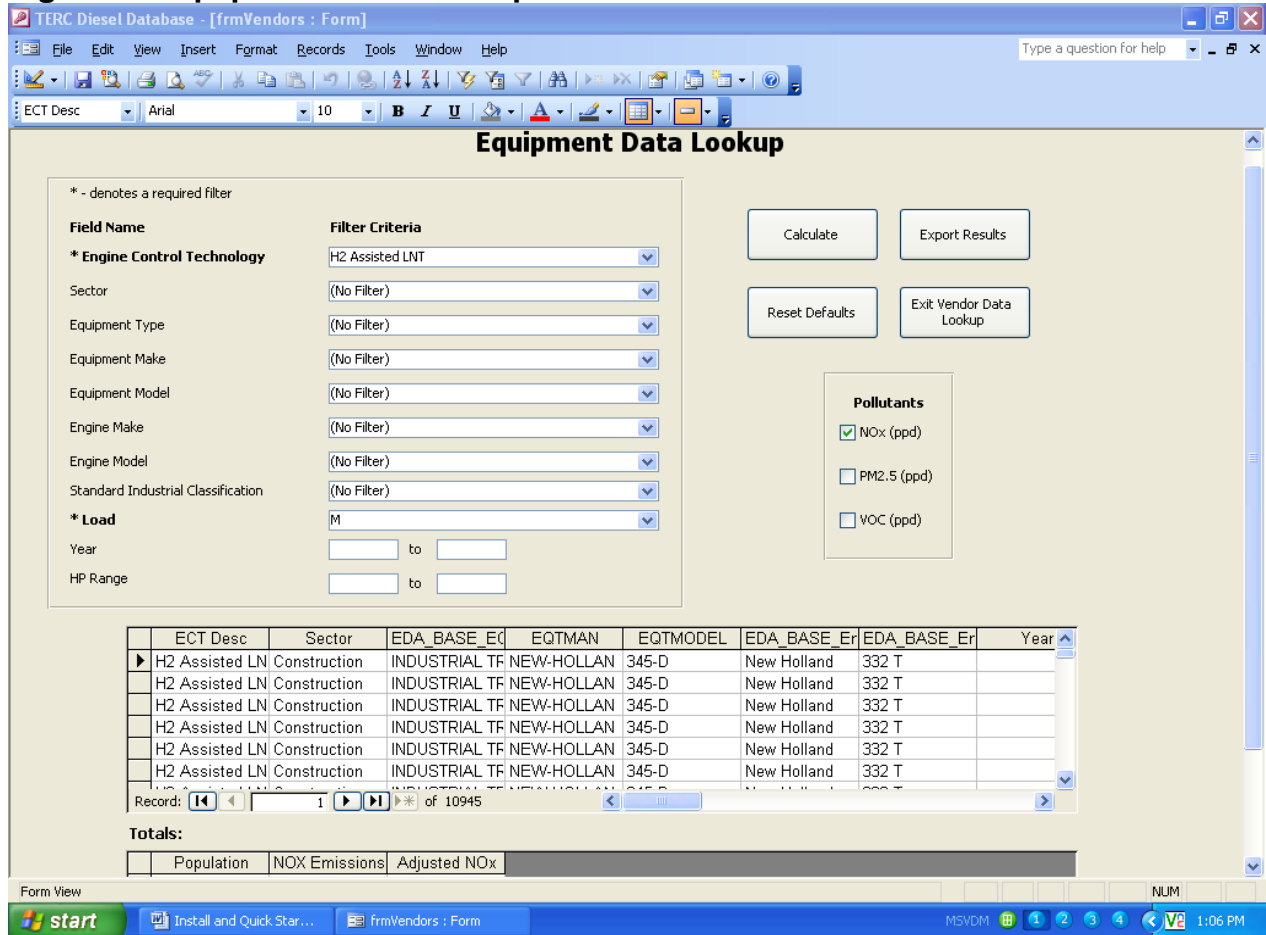
This screen allows a user to sequentially apply “filters” to the data to create a customized report. A user chooses which filters to apply by selecting available options from the drop-down boxes in the **Filter Criteria** section of this screen. A user steps through the filter criteria sequentially, applying a filter of interest, or choosing “No Filter”. Mandatory filters are denoted with an asterisk (*) and bold print.³ The application requires users to select one of the available options from the filter criteria for mandatory fields (i.e., “No Filter” is not a valid selection for a mandatory field). This prevents a user from building a query that will return zero records.

Once the filter criteria have been selected, a user must specify which pollutants to include in the custom report. A user may select one or more pollutants by checking the box next to the specified pollutant in the **Pollutants** box which appears on this screen.

Finally, the user will create the desired report by clicking the *Calculate* button on this screen. A detailed report will be displayed in a table in the top white-space at the bottom of this screen. The user may use the scroll bars in the report area to scroll up and down, left and right within the report. The user may also use standard Access functionality to manipulate the data. For example, the user can sort the report by clicking on a column header in the report to highlight that column, right click using the mouse to open a menu, and choose sort (ascending or descending) from the pop-up menu. A user may also re-arrange the order in which the data columns appear. To do this, a user must highlight that column by clicking on the column header. Then, the user places the cursor over the column header, left-clicks and holds the mouse button, drags the column to the desired order in the report, and releases the mouse button. A summary report is also created and is displayed in the second white-space at the bottom of the screen, labeled “Totals”.

³ Selecting “default” under Load filter assigns load values corresponding to NONROAD defaults.

Figure 3. Equipment Data Lookup



Once the report is run, a user may export the report to an Excel file by clicking on the *Export Results* button.

In order to run a new report, all of the filters must be cleared and set back to default by clicking the *Reset Defaults* button on this screen.

The user may exit the Emissions Calculator and return to the welcome screen by clicking on the *Exit Vendor Data Lookup* button.