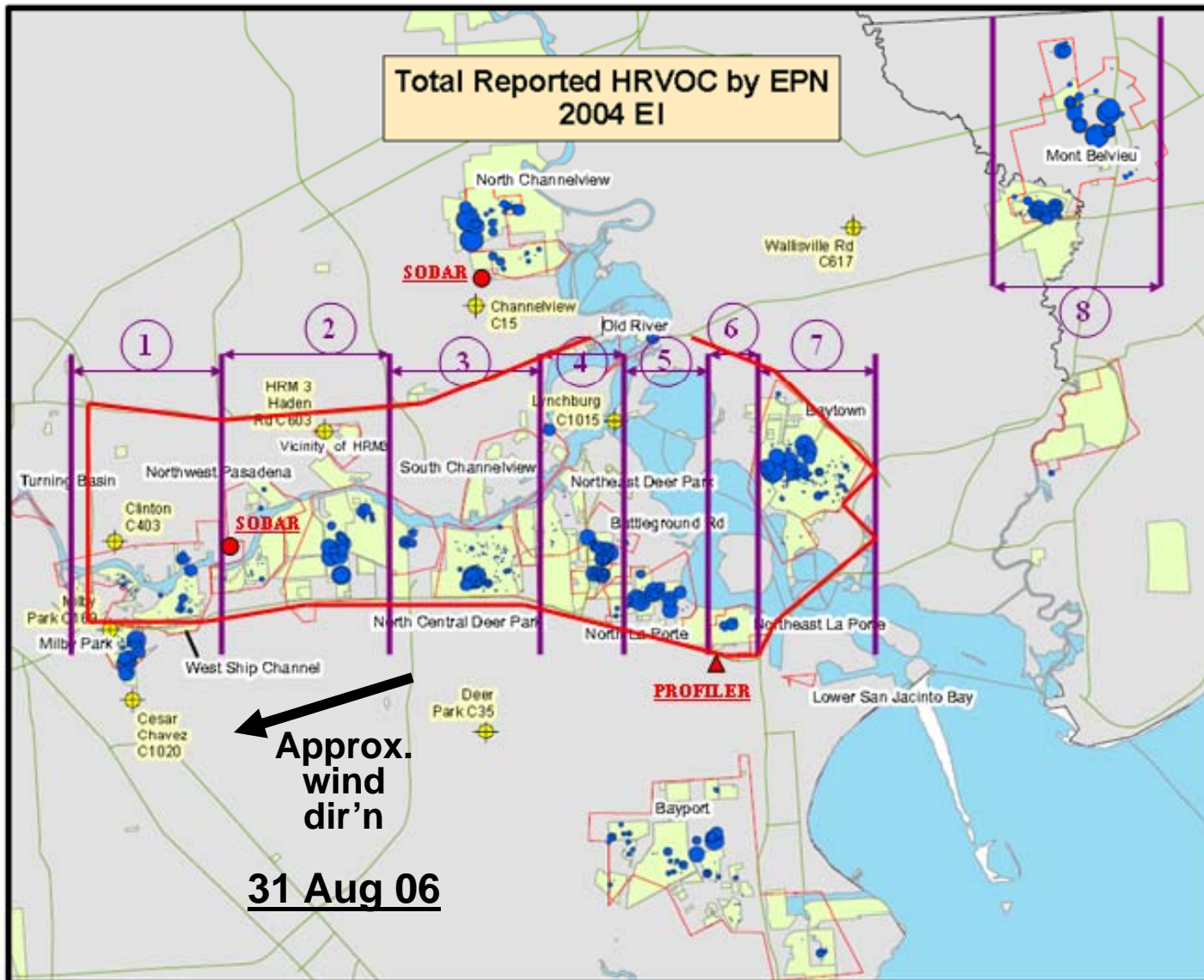
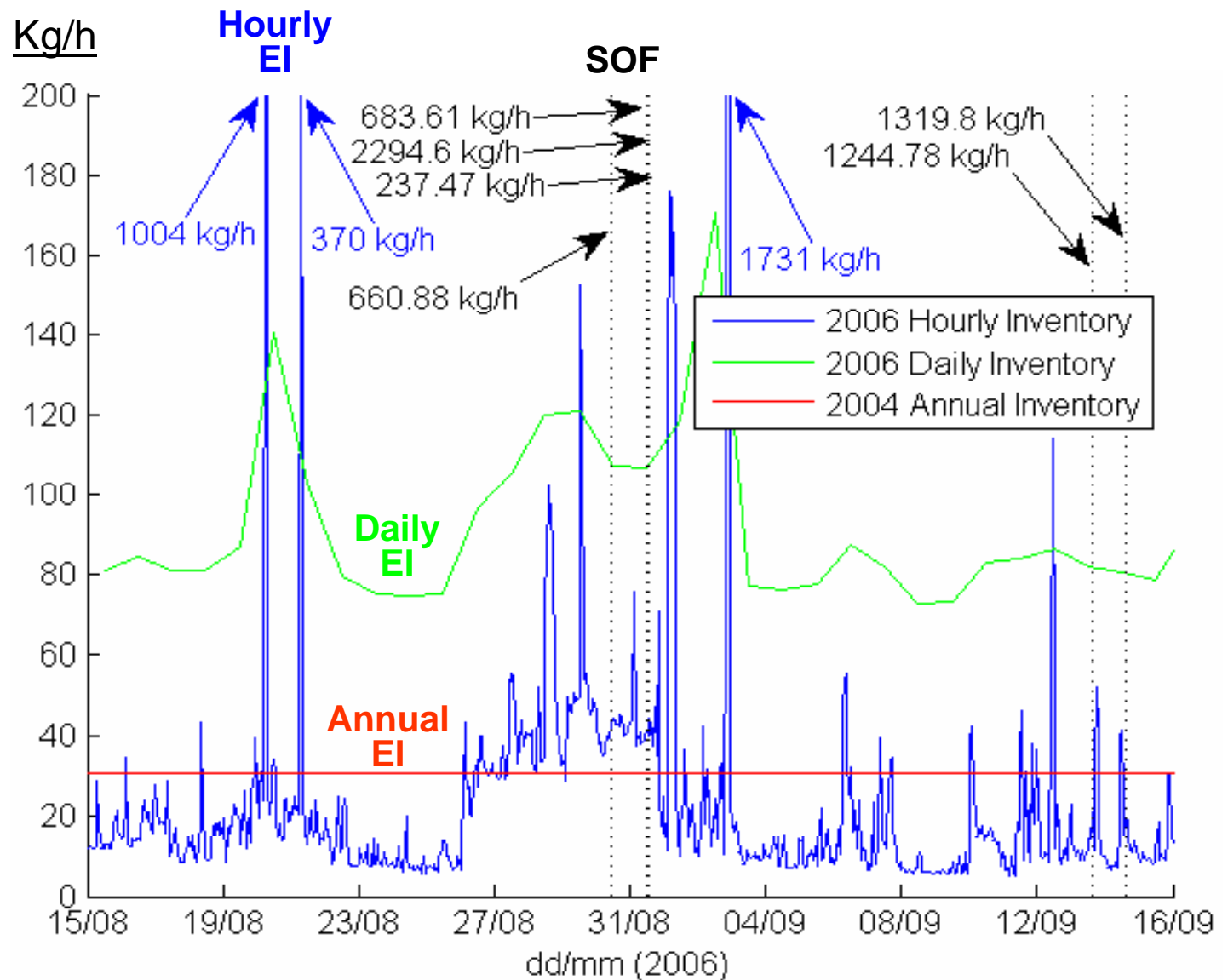


Ship channel SOF Box and SOF Emission Sectors



Hourly, Daily and Annual EI data of PROPENE

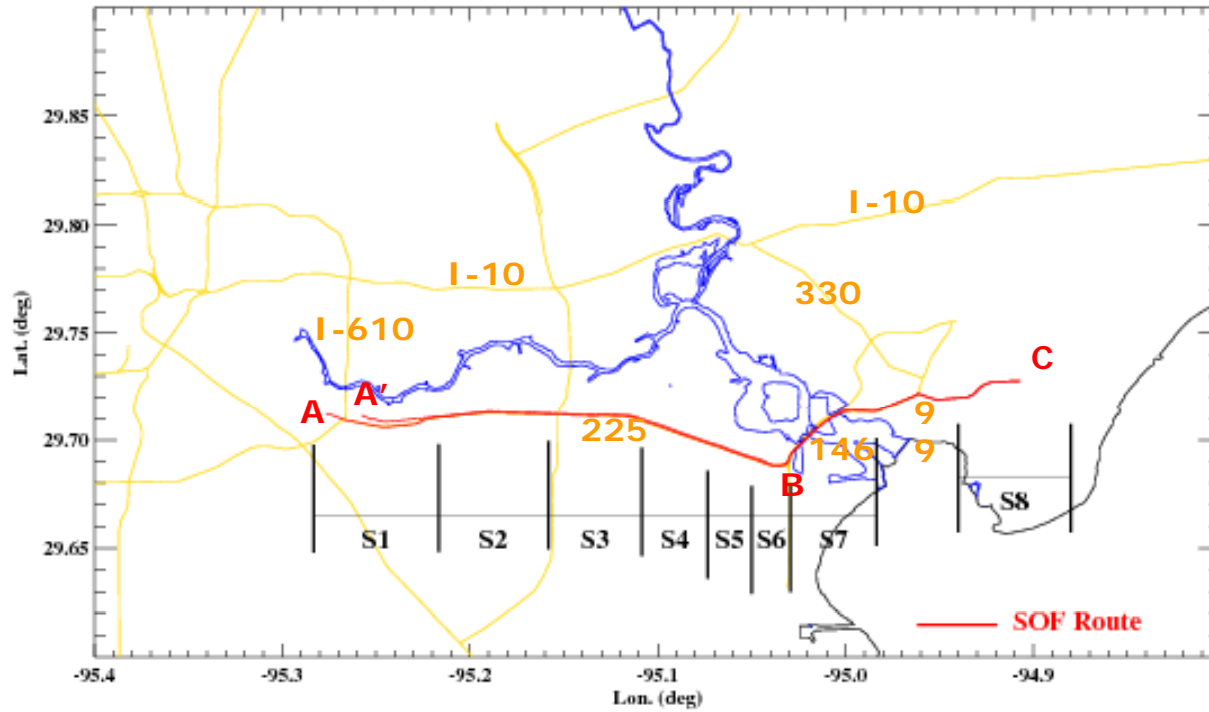
Compared to SOF Data for SOF Sectors 4, 5, 6



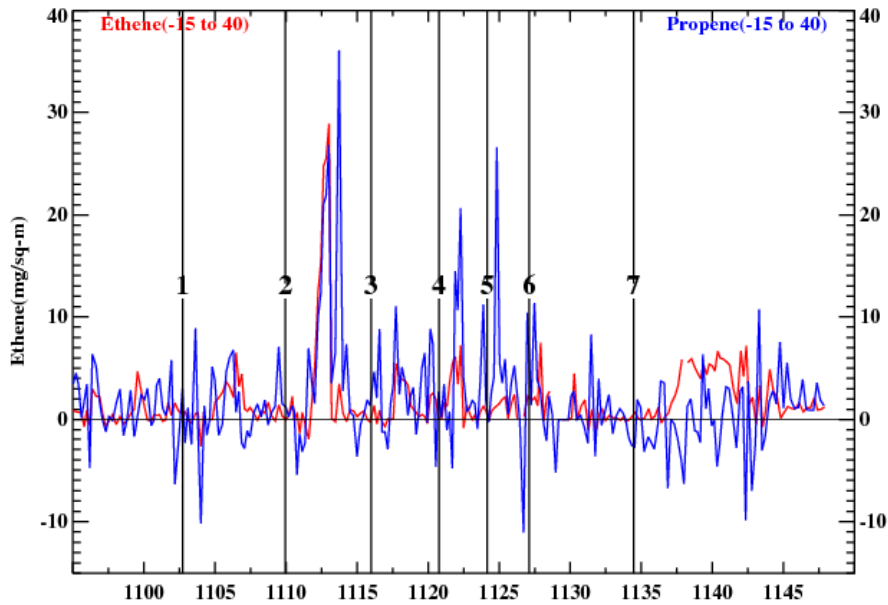
Observations

1. Correlations between SOF and EI peaks is poor
2. SOF emissions of propene from the same sources are very variable
3. SOF emission estimates are ~ order of mag. higher
4. Flares are a major contributor of propene

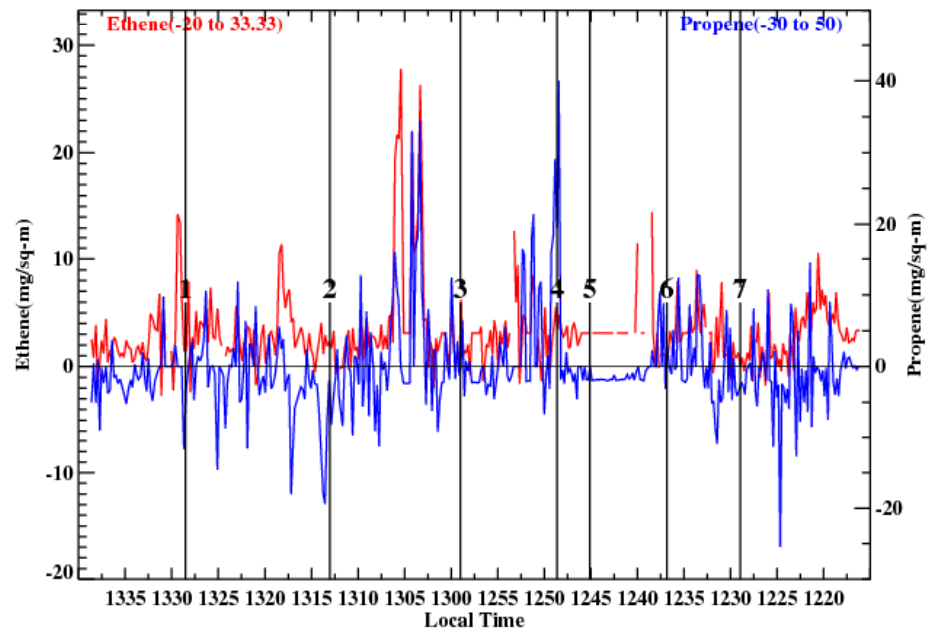
30 Aug 06



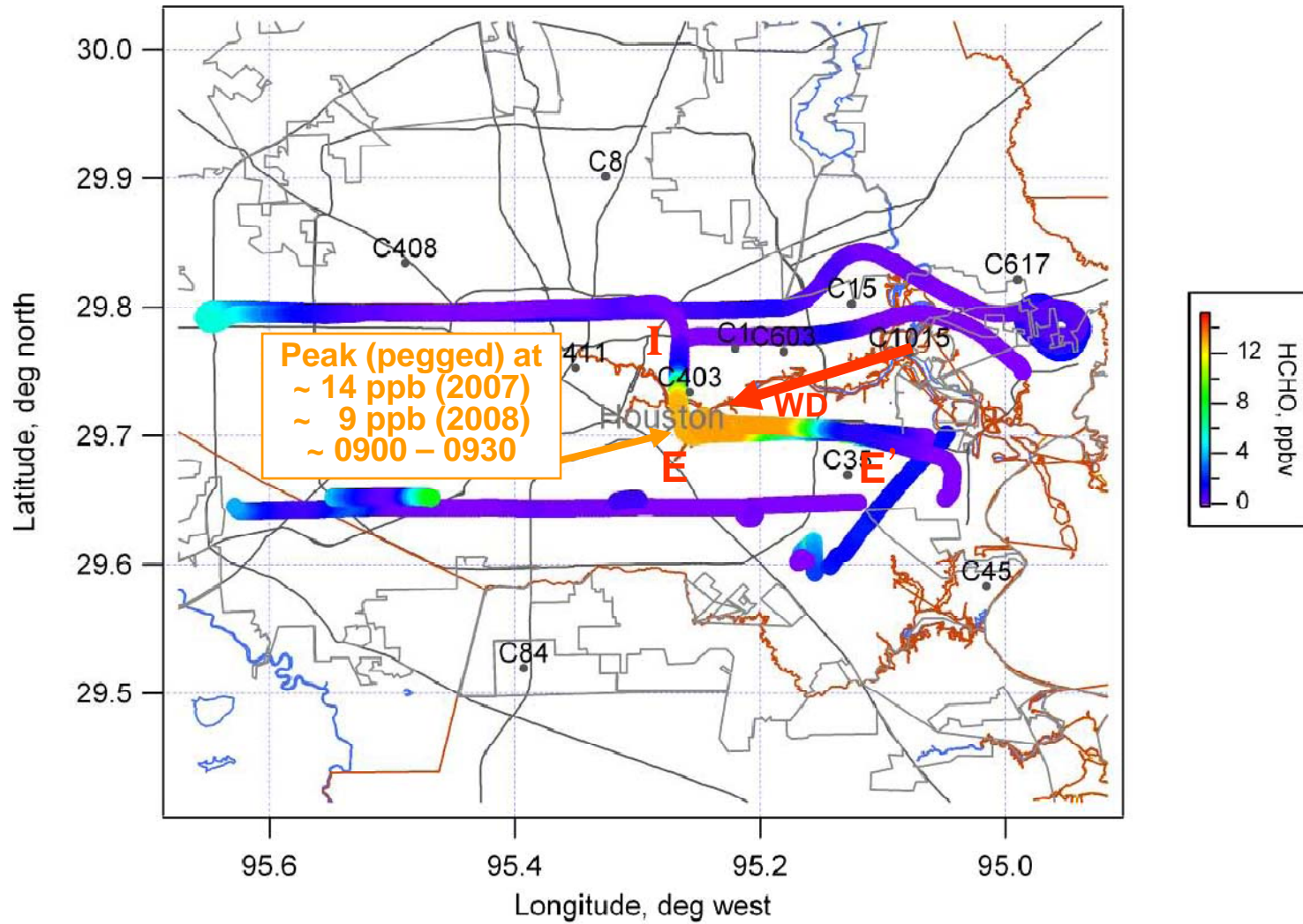
30 Aug 2006 HSC Downwind traverse: A - B - C (105500-114800)



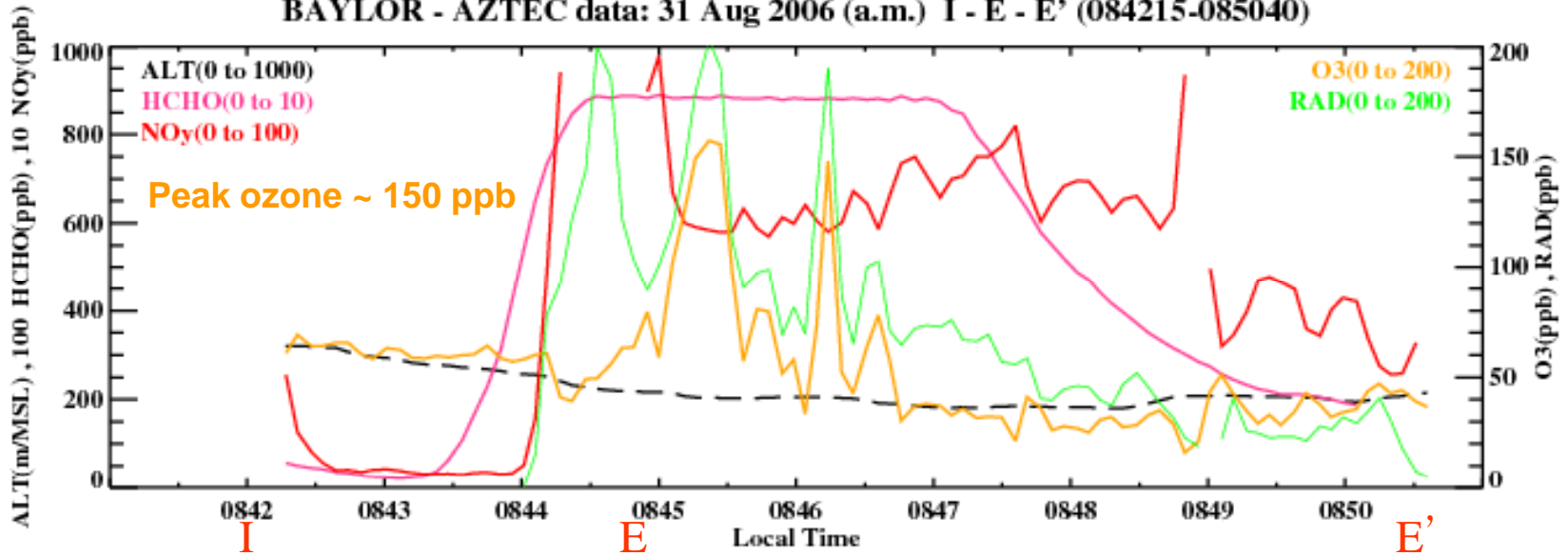
30 Aug 2006 HSC Downwind traverse: C - B - A' (133837-121600)



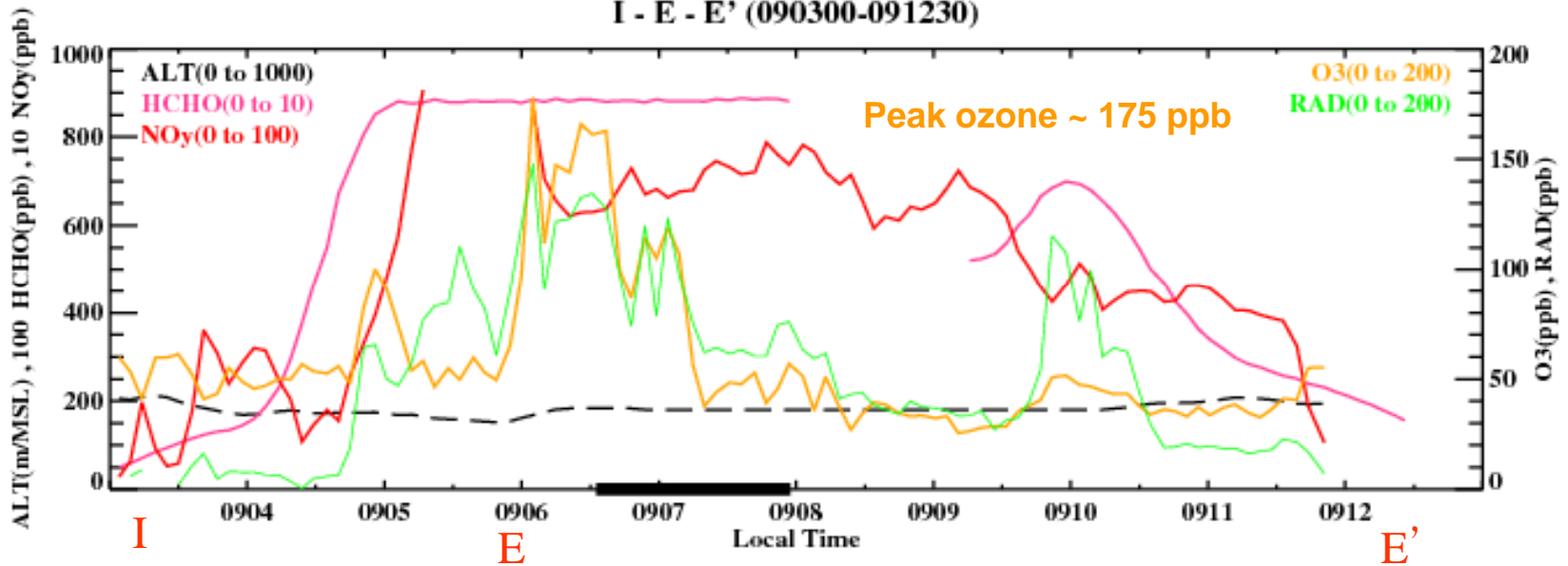
Baylor Aztec Flight : 31 Aug 2006 (a.m. ~ 0745 – 1032)
(Data shown are from 2007 report)



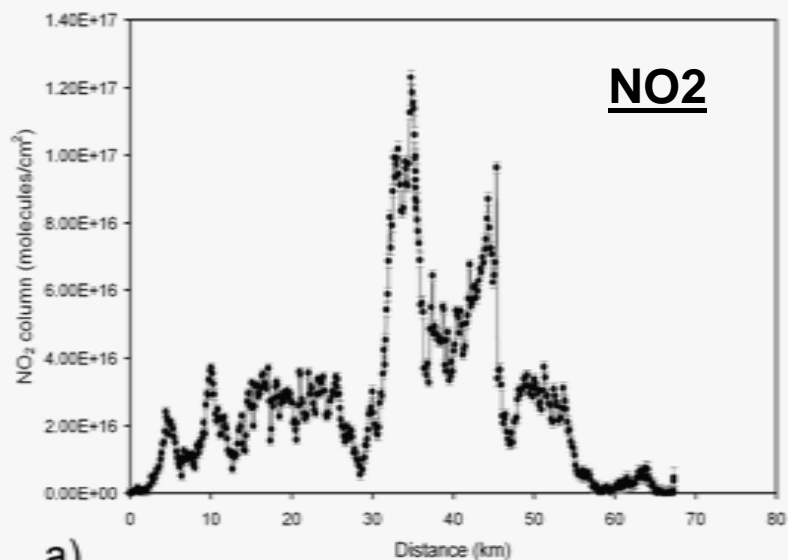
BAYLOR - AZTEC data: 31 Aug 2006 (a.m.) I - E - E' (084215-085040)



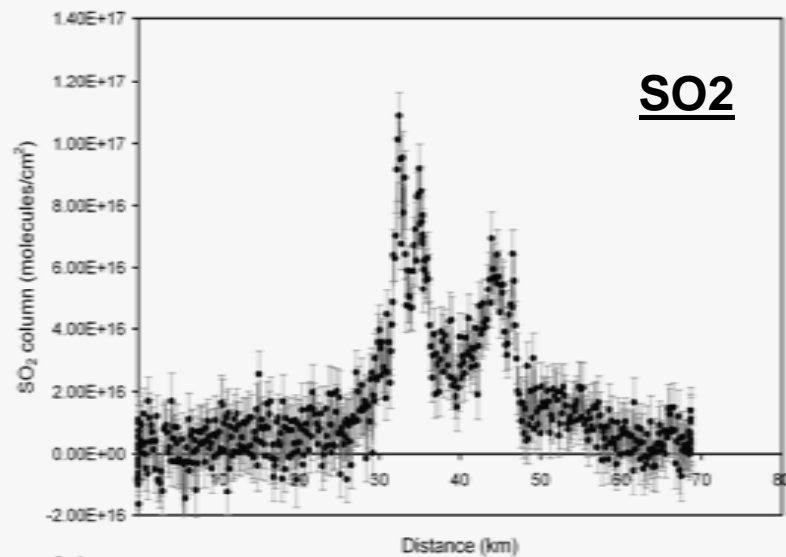
I - E - E' (090300-091230)



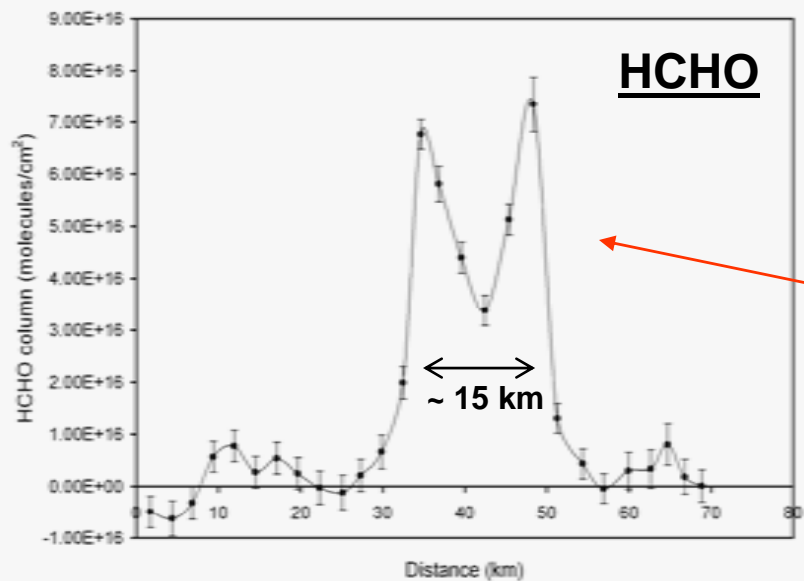
Chalmers U. DOAS Data, 31 Aug 2006



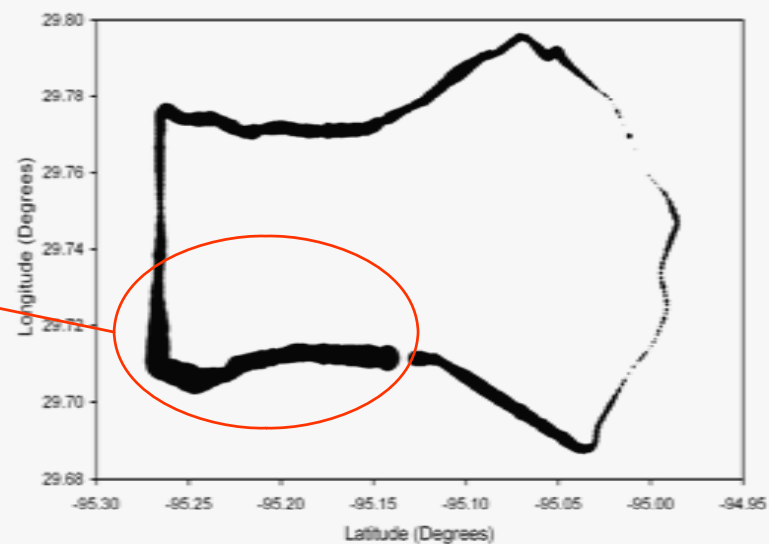
a)



b)



c)



d)