

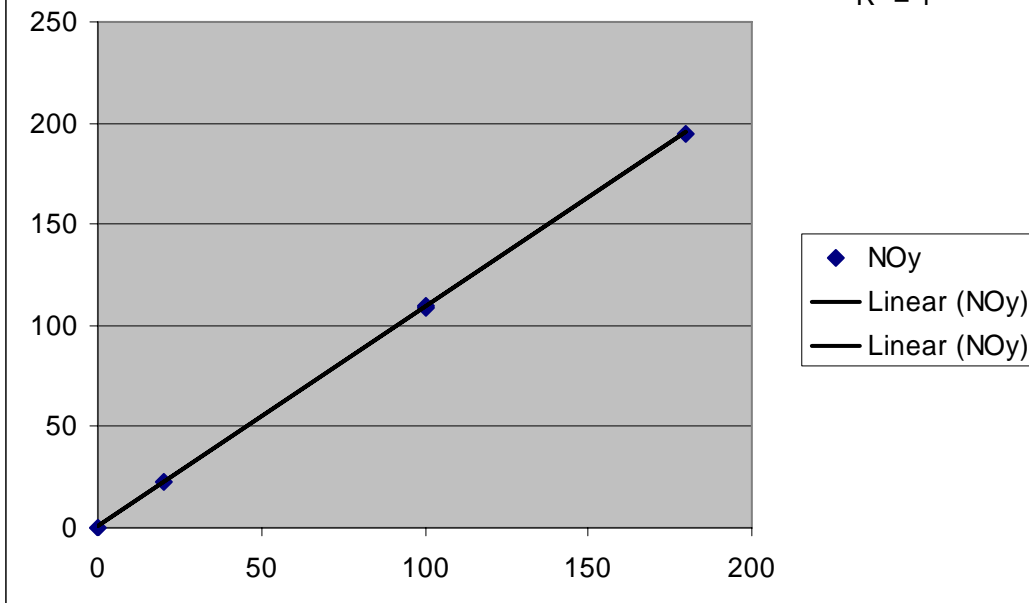
These plots show the results of the TVA calibrations using the onboard TEII 146 calibrator. These calibrations were performed between 1100 and 1200 on August 15<sup>th</sup>, 2006. The x-axis represents the target (reference) concentration and the y-axis represents the unadjusted instrument response. All the available points are included.

Note: The r-squared values are plotted by excel as “1” only if the calculated value exceeds 0.9999.

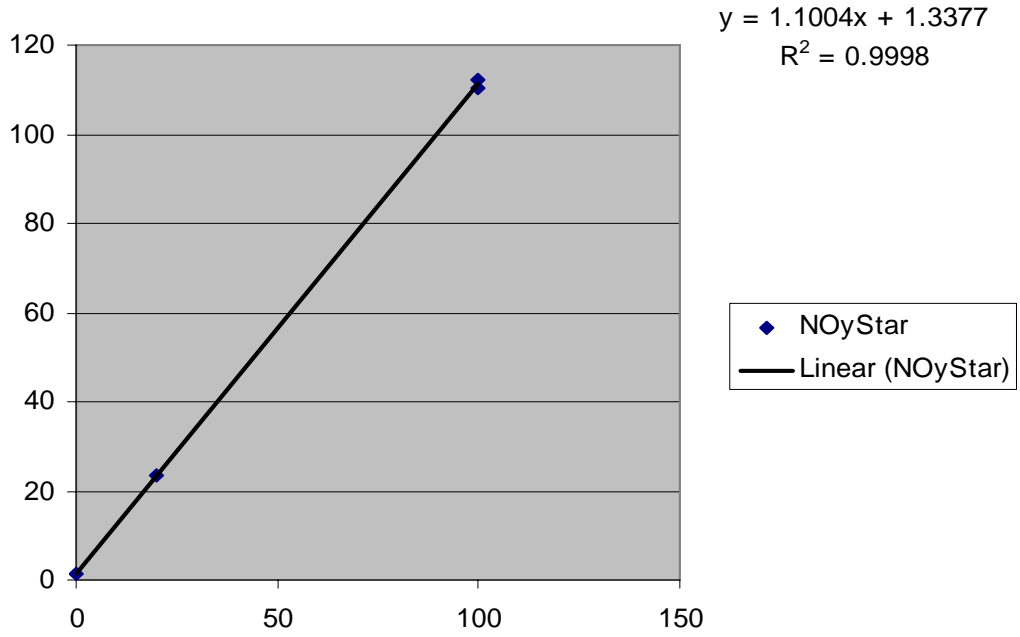
There is no suggestion of a significant non-linearity from these data.

**NOy Linearity on Audit 2 Day**

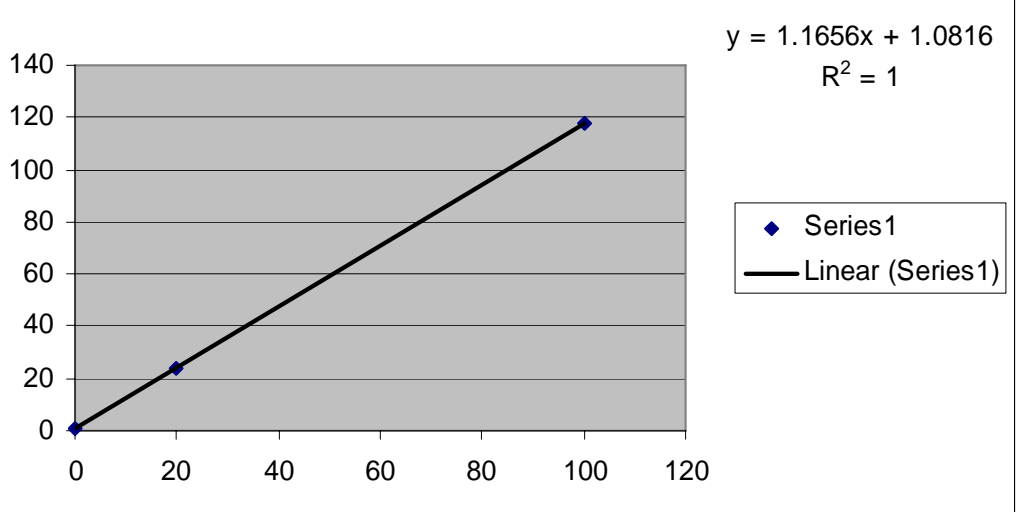
$y = 1.0817x + 0.7724$   
 $R^2 = 1$



### NoyStar Linearity on Audit 2 Day

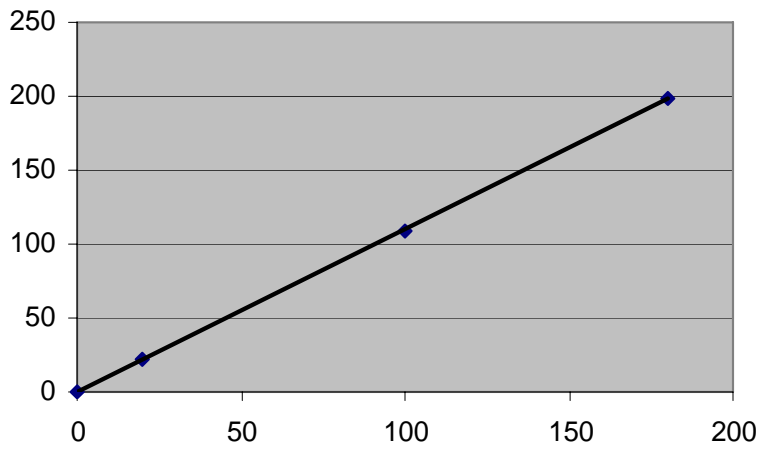


### NO Linearity on Audit2 Day



**NO2 Linearity on Audit2 Day**

$y = 1.098x + 0.2172$   
 $R^2 = 1$



**SO2 Linearity on Audit 2 Day**

$y = 0.9446x + 0.5815$   
 $R^2 = 0.9999$

