

Guide to Site Visits – NYSERDA’s CHP Conference – June 2004

Site Visit
 205 West End Avenue
 Multifamily Residential
 A pair of 150 kW Waukesha Engines

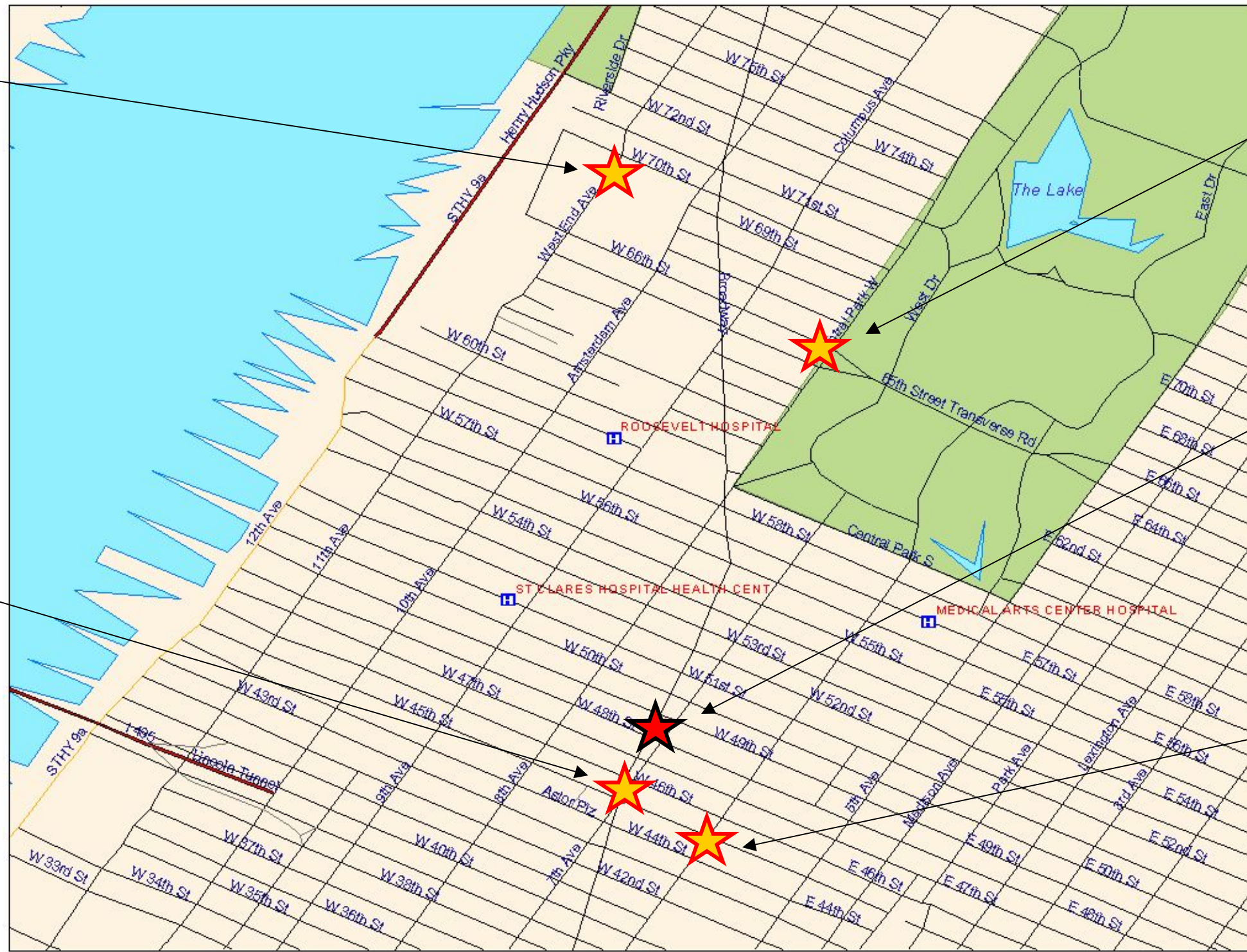
Visitors Welcome:
 Wednesday 6/23/2004
 2:00 PM to 4:00 PM
 and
 Friday 6/25/2004
 2:00 PM to 4:00 PM

Upon arrival at the site, check-in with the front desk for further directions and instructions.

Site Visit
 Marriott Marquis Hotel
 1535 Broadway
 70 kW Ingersoll-Rand Microturbine

Visitors Welcome:
 Wednesday 6/23/2004
 Tour #1 begins at 3:00 PM
 and
 Wednesday 6/23/2004
 Tour #2 begins at 4:00 PM
 Each tour group limited to 20 visitors
 Sign-up roster at (518) 862-1090 ext. 3252

Upon arrival at the site, take elevator to Floor #8, report to the Concierge Desk and ask for John Flood of UCS, Inc. John will lead the tours beginning promptly at the stated times.



Site Visit
 10 West 66th Street
 Multifamily Residential
 70 kW Ingersoll-Rand Microturbine

Visitors Welcome:
 Wednesday 6/23/2004
 2:00 PM to 4:00 PM
 and
 Friday 6/25/2004
 2:00 PM to 4:00 PM

Upon arrival at the site, check-in with the front desk for further directions and instructions.

Conference Venue
 Crowne Plaza Times Square
 1605 Broadway

Site Visit
 Durst/Condé Nast Building
 Commercial Office Building
 Four Times Square
 42nd Street Lobby
 (between 6th Ave. and Broadway)
 A pair of 200 kW ONSI/UTC Fuel Cells

Visitors Welcome:
 Friday 6/25/2004
 Tour #1 begins at 2:00 PM
 and
 Friday 6/25/2004
 Tour #2 begins at 3:00 PM
 Each tour group limited to 20 visitors
 Sign-up roster at (518) 862-1090 ext. 3252

Upon arrival at the site, visitors must sign “hold harmless” releases at the reception desk. Tours will depart from the reception desk beginning promptly at the stated times.

Site Visit

10 West 66th Street
Multifamily Residential
70 kW Ingersoll-Rand
Microturbine

Visitors Welcome:

Wednesday 6/23/2004 from 2 to 4 PM
and
Friday 6/25/2004 from 2 to 4 PM

Upon arrival at the site, check-in with the front desk for further directions and instructions.

Contractor

DSM Engineering Associates, P.C.
Hauppauge, New York
Tel: 631.360.1208

10 West 66th Street is an electrically heated and cooled multifamily (256 units) residential cooperative building in mid-town Manhattan.

The CHP System installed at this site consists of an Ingersoll-Rand PowerWorks™ 70 kW Cogeneration Microturbine. The PowerWorks™ 70kW microturbine unit is a complete, self-contained natural gas turbine-driven induction generator package with controls, safety devices, and heat recovery built within a single, sound-attenuating enclosure. Recently commissioned, the system operates 24/7 with recovered heat being utilized to provide heating of domestic hot water for the building. System fuel-conversion efficiency is approximately 65%.



Site Visit

205 West End Avenue
Multifamily Residential
A pair of 150 kW Waukesha Engines

Visitors Welcome:

Wednesday 6/23/2004 from 2 to 4 PM
and
Friday 6/25/2004 from 2 to 4 PM

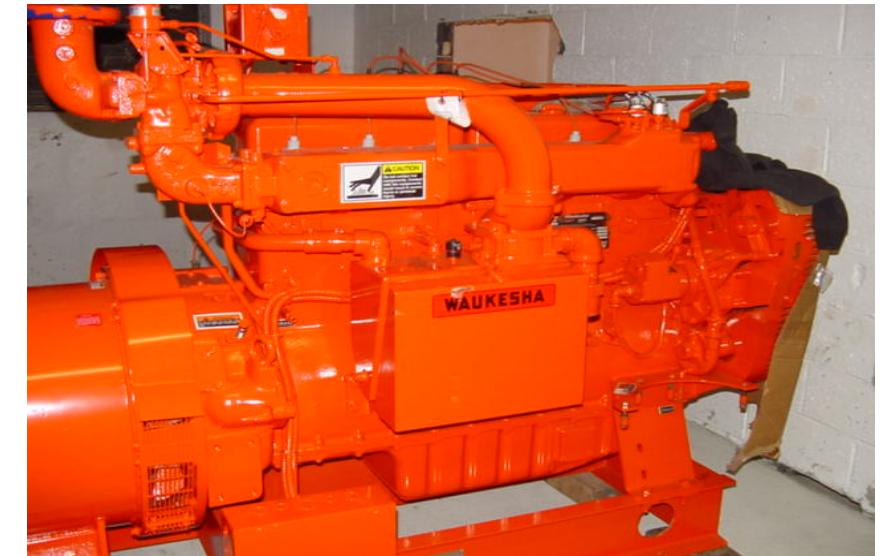
Upon arrival at the site, check-in with the front desk for further directions and instructions.

Contractor

CRM Energy Technologies
Chestnut Ridge, New York
Tel: 845.356.2100

205 West End Avenue Condominium is a 29-story high-rise with 540 residential units. Domestic hot water and comfort heating is provided by commercial high-pressure steam from Consolidated Edison. Domestic hot water is stored in three storage tanks totaling 10,000 gallons of capacity.

The CHP System installed at this site consists of two 150 kW natural gas Waukesha rich burn internal combustion engines equipped with 3-way NSCR catalyst, critical silencers and air/fuel controllers to reduce emissions. CRM’s proprietary “sequence of operations” allow for automatic load-following by the system induction generators. Commissioned in January 2004, this system operates 24/7 and is capable of annually producing approximately 2,336,000 kilowatt-hours of electricity, and is projected to save 205 West End Condominium \$322,049 annually in energy costs.



Site Visit

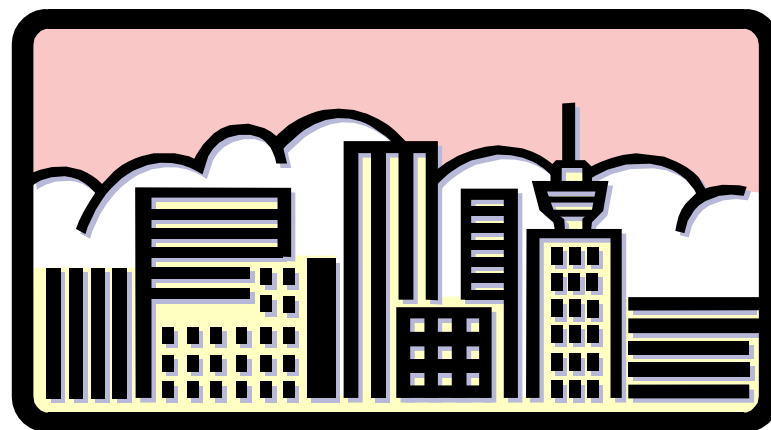
Durst/Condé Nast Building
Commercial Office Building
Four Times Square
42nd Street Lobby (between 6th Ave. and Broadway)
A pair of 200 kW ONSI/UTC Fuel Cells

Visitors Welcome:

Friday 6/25/2004
Tour #1 begins at 2:00 PM
Tour group limited to 20 visitors
sign-up roster c/o NYSERDA at (518) 862-1090 ext. 3252
and
Friday 6/25/2004
Tour #2 begins at 3:00 PM
Tour group limited to 20 visitors
sign-up roster c/o NYSERDA at (518) 862-1090 ext. 3252

Upon arrival at the site, visitors must sign “hold harmless” releases at the reception desk. Pamela Lippe, environmental consultant to The Durst Organization and Gene Walsh, Building Manager at Four Times Square, will lead the tours beginning promptly at the stated times.

This system, which operates on natural gas, provides 400 kW of base building power and runs cleanly and reliably 24 hours per day/7 days per week. This system was commissioned in 1999.



Site Visit

Marriott Marquis Hotel
1535 Broadway
70 kW Ingersoll-Rand
Microturbine

Visitors Welcome:

Wednesday 6/23/2004
Tour #1 begins at 3:00 PM
Tour group limited to 20 visitors
Sign-up roster c/o NYSERDA at (518) 862-1090 ext. 3252
and
Wednesday 6/23/2004
Tour #2 begins at 4:00 PM
Tour group limited to 20 visitors
Sign-up roster c/o NYSERDA at (518) 862-1090 ext. 3252

Upon arrival at the site, take elevator to Floor #8, report to the Concierge Desk and ask for John Flood of UCS, Inc. John will lead the tours beginning promptly at the stated time.

This system is currently undergoing construction. An original microturbine has been hoisted into place on the 8th floor and has not yet been “plumbed-in.” It will be swapped with a replacement unit that will be capable of operation without the need for any enclosures to protect it from the elements. The microturbine will operate on natural gas, and will provide electricity year-round to help offset the high electric costs experienced in Manhattan.

Visitors can observe the original microturbine placement, and see its relative position to gas/electric tie-ins. The gas tie-in has already been piped to the unit. The replacement microturbine, which resides on the loading platform and only needs to be swapped-out, is expected to be commissioned in December 2004, at which time it will operate 24-hours per day/7 days per week.

